

SHURE®

LEGENDARY
PERFORMANCE™

Wired Microphones
520DX

**520DX [GREEN BULLET]
HARMONICA MICROPHONE**

**MICROPHONE POUR HARMONICA
520DX (GREEN BULLET)**

**HARMONIKA-MIKROFON 520DX
(GREEN BULLET)**

**MICROFONO 520DX PARA ARMONICA
(GREEN BULLET)**

**MICROFONO DA ARMONICA 520DX
(GREEN BULLET)**

520DX

«GREEN BULLET»

520DX "GREEN BULLET"

520DX

()

520DX "GREEN BULLET"



N108



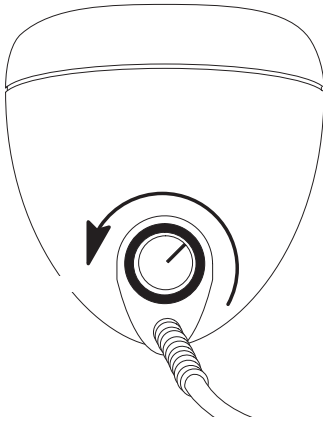
GENERAL

APPLICATIONS

-
-
-

NOTE:

VOLUME CONTROL

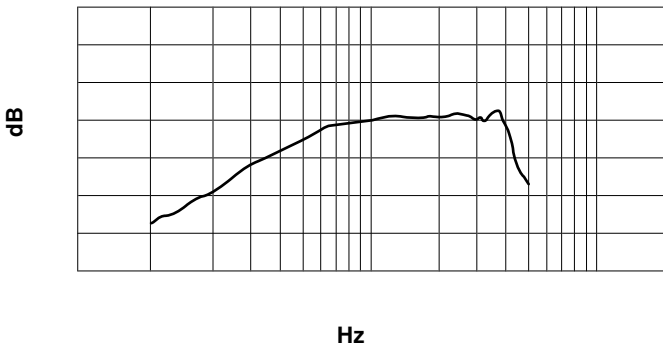


VOLUME CONTROL KNOB

LOW IMPEDANCE

SPECIFICATIONS

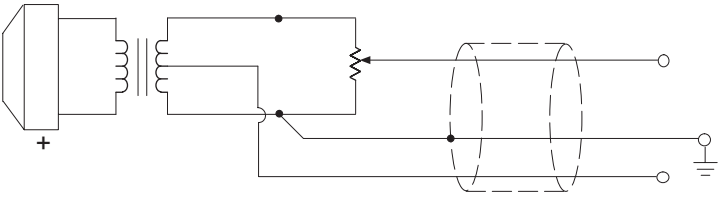
Type	
Frequency Response	
Polar Pattern	
Impedance	
Load Impedance Range	Minimum: 100 k
Output Level (at 1,000 Hz)	
Polarity	
Cable	
Case	
Dimensions	
Net Weight (with cable)	



TYPICAL FREQUENCY RESPONSE

Certification

CONNECTIONS



REPLACEMENT PARTS

MICROPHONE POUR HARMONICA 520DX (GREEN BULLET) GUIDE DE L'UTILISATEUR

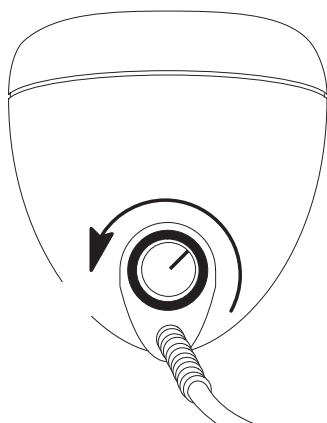
GÉNÉRALITÉS

APPLICATIONS

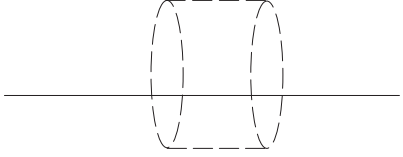
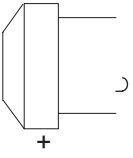
-
-
-

REMARQUE

COMMANDE DE VOLUME



BOUTON DE VOLUME



HARMONIKA-MIKROFON 520DX (GREEN BULLET) BEDIENUNGSANLEITUNG

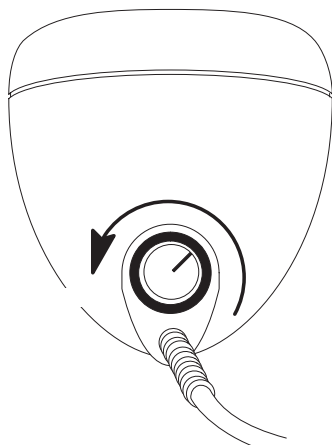
ALLGEMEINES

VERWENDUNGSMÖGLICHKEITEN

-
-
-

HINWEIS:

REGELUNG DES LAUTSTÄRKEPEGELS



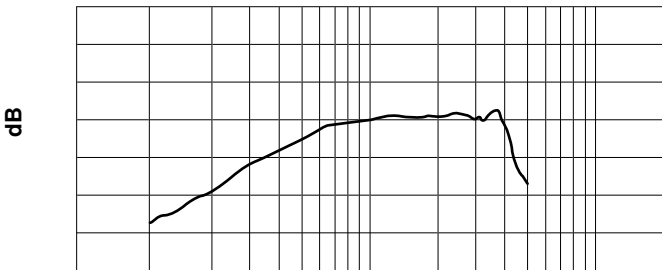
LAUTSTÄRKEPEGEL-REGLER

NIEDEROHMIGE ANWENDUNG

HINWEIS:

TECHNISCHE DATEN

Typ	
Frequenzgang	
Richtcharakteristik	
Impedanz	
Anschlussimpedanzbereich	Mindestens 100 k
Ausgangspegel (bei 1000 Hz)	
Polarität	
Kabel	
Gehäuse	
Abmessungen	
Nettogewicht (mit Kabel)	

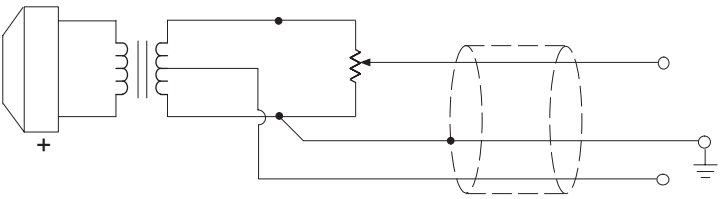


Hz

TYPISCHER FREQUENZGANG

ZERTIFIZIERUNG

ANSCHLÜSSE



**ININTERNE ANSCHLÜSSE:
UNSYMMETRISCHER, HOCHOHMIGER AUSGANG**

ERSATZTEILE

MICROFONO 520DX PARA ARMONICA (GREEN BULLET) GUIA DEL USUARIO

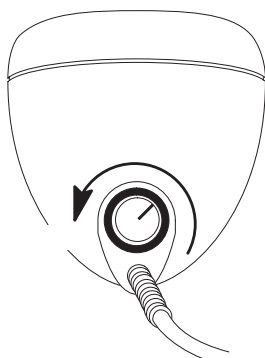
GENERALIDADES

APLICACIONES

-
-
-

NOTA:

CONTROL DE VOLUMEN



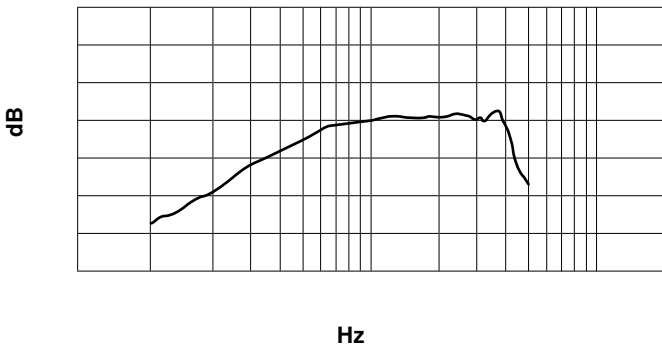
CONTROL DE VOLUMEN

BAJA IMPEDANCIA

NOTA:

ESPECIFICACIONES

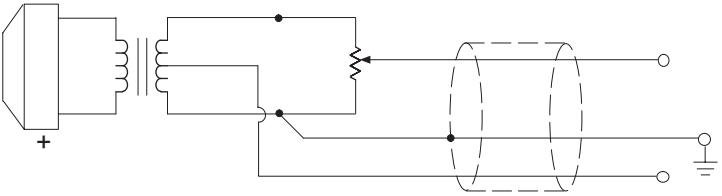
Tipo	
Respuesta en de frecuencias	
Patrón polar	
Impedancia	
Gama de impedancia de carga	Mínima: 100k
Nivel de salida (a 1.000 Hz)	
Polaridad	
Cable	
Caja	
Dimensiones	



RESPUESTA DE FRECUENCIAS TIPICA

CERTIFICACIONES

CONEXIONES



**CONEXIONES INTERNAS:
SALIDA DE ALTA IMPEDANCIA DESEQUILIBRADA**

REPUESTOS

MICROFONO DA ARMONICA 520DX (" GREEN BULLET ") GUIDA D'USO

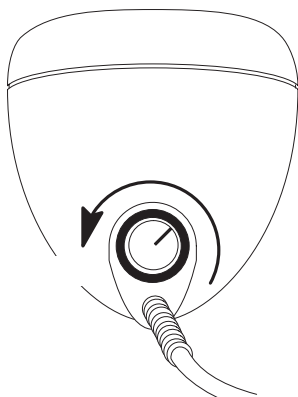
CARATTERISTICHE GENERALI

APPLICAZIONI

-
-
-

NOTA -

REGOLAZIONE DEL VOLUME



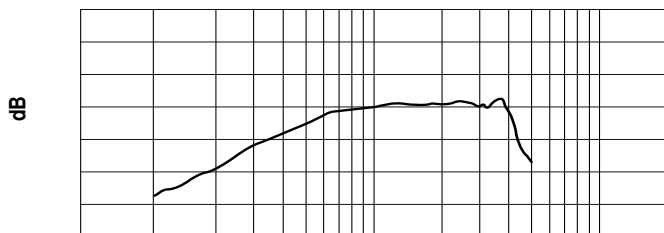
MANOPOLA DI REGOLAZIONE DEL VOLUME

BASSA IMPEDENZA

NOTA -

DATI TECNICI

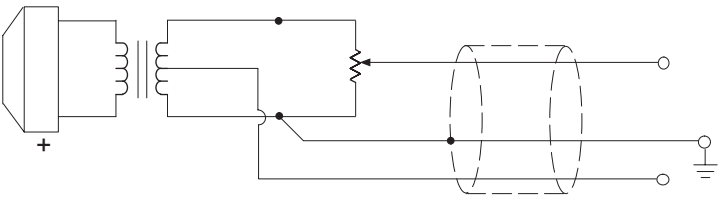
Tipo di microfono	
Risposta in frequenza	
Diagramma polare	
Impedenza	
Limiti dell'impedenza di carico	Minimo: 100 k
Livello di uscita (a 1.000 Hz)	
Polarità	
Cavo	
Involucro	
Dimensioni	
Peso netto (con cavo)	



Hz
RISPOSTA IN FREQUENZA TIPICA

OMOLOGAZIONI

CONNESSIONI



**CONNESSIONI INTERNE:
USCITA SBILANCIATA AD ALTA IMPEDENZA**

COMPONENTI DI RICAMBIO

520DX (GREEN BULLET)

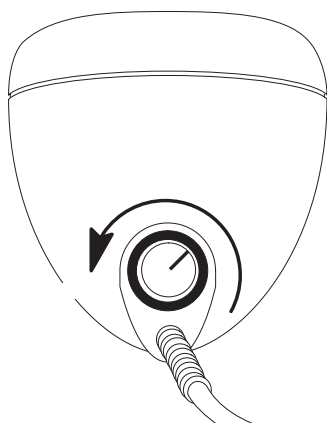
520DX «Green Bullet»,

520DX

1/4-

520DX

-
-
-



520DX

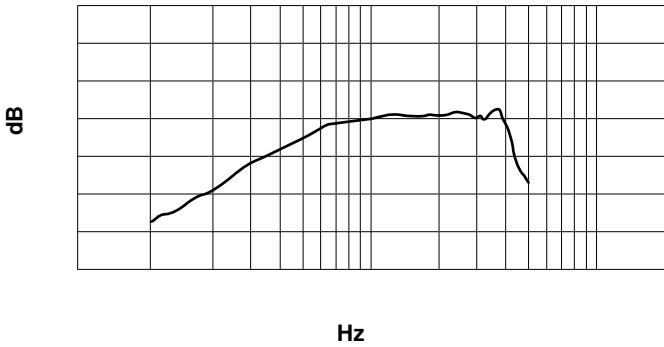
, Shure

520DX

Shure Applications Group

(847) 600-8440

	100 - 5 000	
		: 100
(1 000)	1 = 94	-38,0 / (13)
		()
	6,1 ,	(1/4-)
	63 , 82,6	
()	737	



CE.

2004/108/EEC

EN55103-1:1996 EN55103-2:1996

(E1)

(E2).

D-74078 Heilbronn, Germany ()

: +49 7131 72 14 0

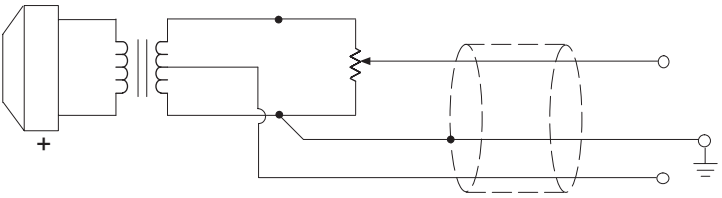
: +49 7131 72 14 14

: EMEAsupport@shure.de

520DX Green Bullet

1/4-

.g.



Shure . 1-800-516-2525.

- Shure.

520DX

()

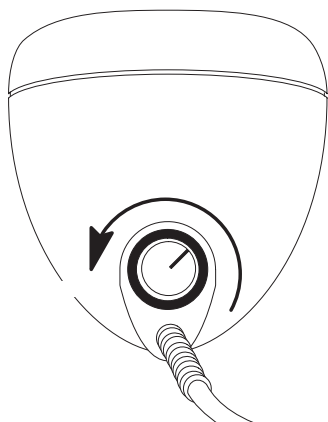
520DX

520DX

6.35mm

520DX

-
-



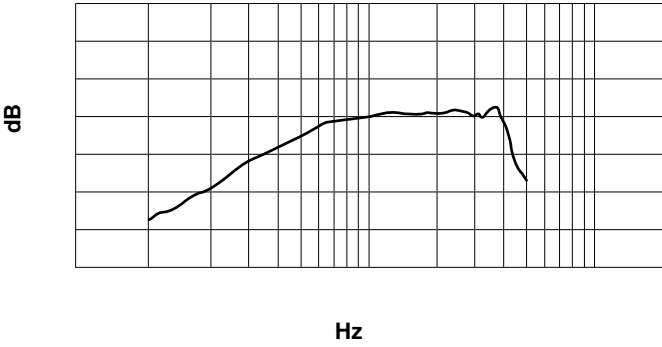
520DX
A95U /

Shure

520DX

Shure Applications Group (847) 600-8440

	100	5,000 Hz
	100 k	
1,000 Hz)		-38.0 dBV/Pa (13 mV)
	6.35mm 2	6.1 m
	63 mm	82.6 mm



CE

EMC

2004/108/EC
EN55103-2:1996

(E 1)

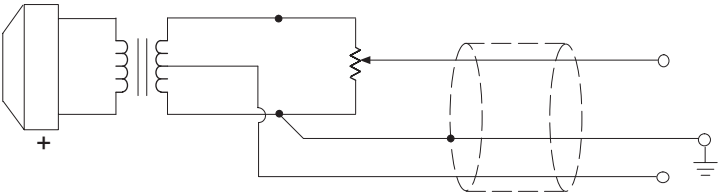
(E 2)

: EMEA

E EMEAsupport@shure.de

520DX

6.35mm



: 1-800-516-2525 (Shure) Shure

520DX "GREEN BULLET"

520DX

520DX

1/4

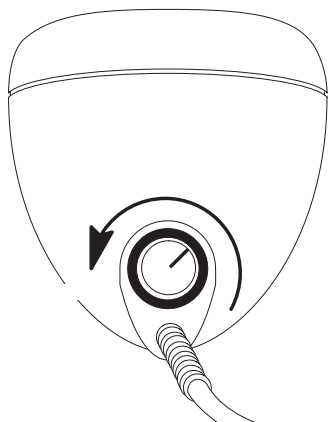
520DX

•

•

•

:



520DX

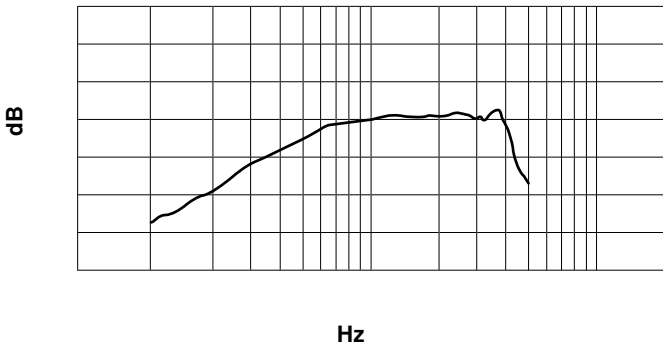
Shure A95U

-

: 520DX

Shure Applications Group (847) 600-8440

	: 100 k
(1,000 Hz)	-38.0 dBV/Pa (13 mV)
	()
	6.1 m (20 ft) 1/4
	()
	63 mm (2.5) , 82.6 mm (3 1/4)
()	



CE
(E1)
EN55103-2:1996

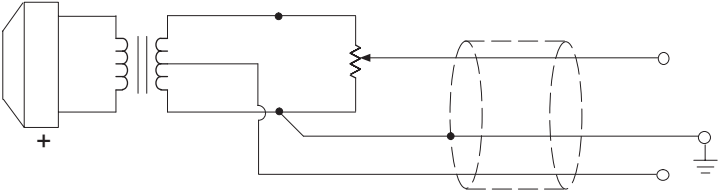
European EMC Directive 2004/108/EC
(E2) (Harmonized Standards) EN55103-1:1996

: EMEA()

: +49 7131 72 14 0
: +49 7131 72 14 14
: EMEAsupport@shure.de

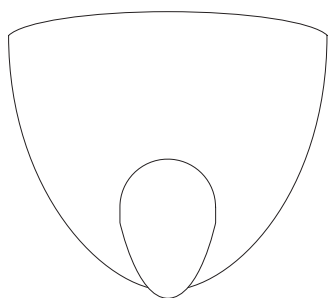
520DX

1/4



Shure
Shure

(1-800-516-2525)



CE
EN55103-1 1996

EMC
EN55103-2 1996

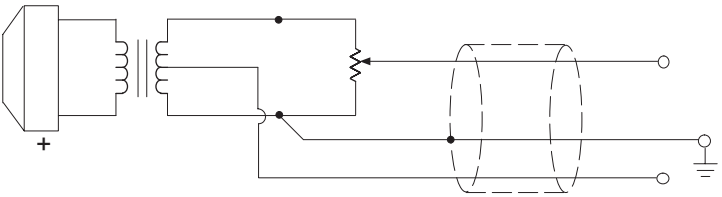
2004/108/EC
(E1)

Harmonized
(E2)

+49 7131 72 14 0
+49 7131 72 14 14
EMEAsupport@shure.de

520DX Green Bullet

1/4



1-800-516-2525 Shure
Shure

EU DECLARATION OF CONFORMITY

We

Shure Incorporated

Niles, Illinois, 60714-6008 U.S.A

(847) 600-2000

Declare that we are responsible for the following products:

Model: 520DX

Description: Dynamic Microphone

are in conformity to European CE Marking Directive 93/68/EEC.

EN 60335-2

Manufacturer: Shure Incorporated

Date: 19 November 1993

Signed

Craig Kazaker
Name: Craig Kazaker

Title: Chief Engineer, Corporate Quality

Shure Incorporated

European Contact: Shure Europe GmbH

74076 Heidenheim, Germany

Wannenacker Str. 28

Phone: 49 7141 7211-0 Fax: 49 7141 7211-1

SHURE®
